



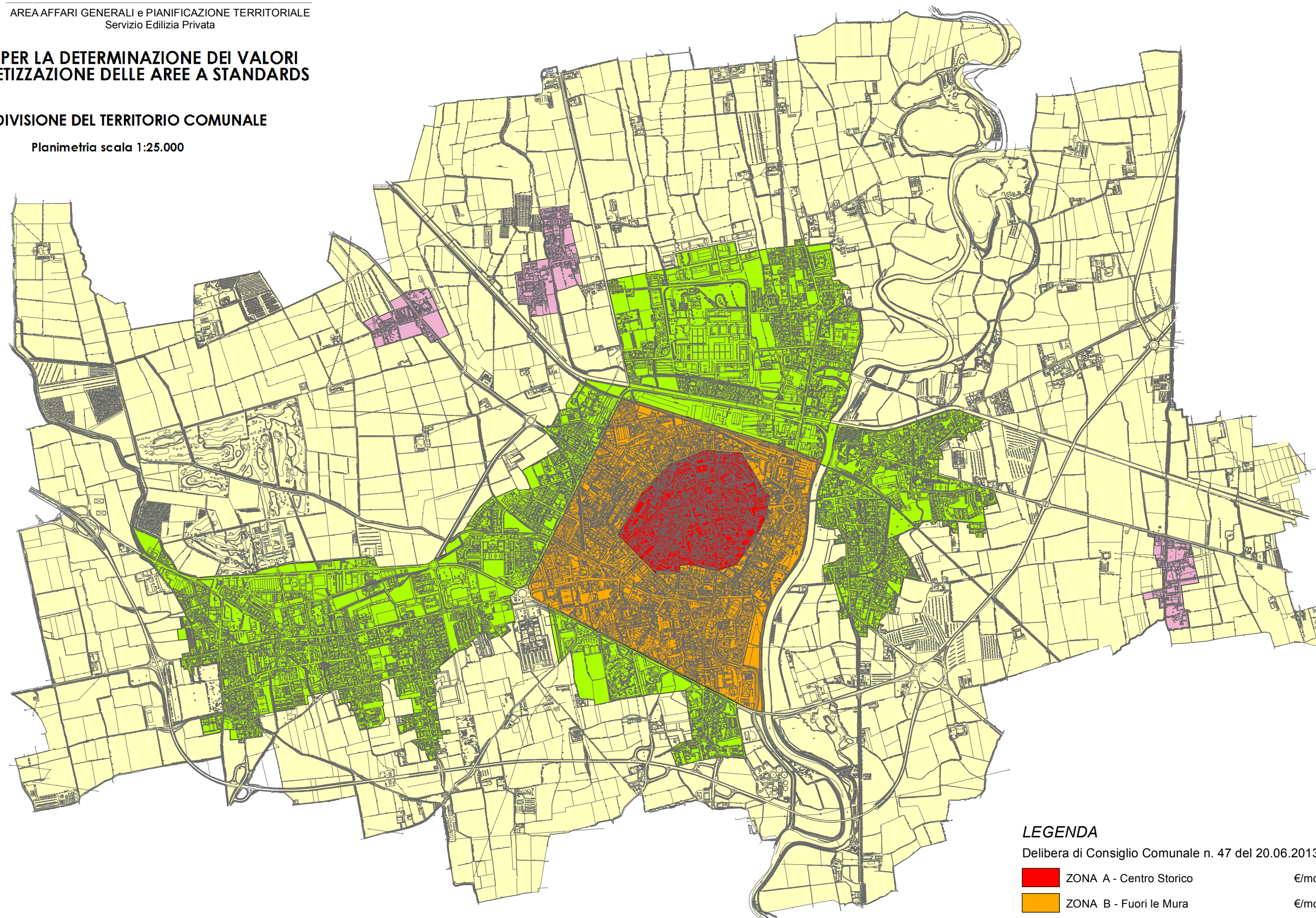
COMUNE DI CREMA

AREA AFFARI GENERALI e PIANIFICAZIONE TERRITORIALE
Servizio Edilizia Privata

CRITERI PER LA DETERMINAZIONE DEI VALORI DI MONETIZZAZIONE DELLE AREE A STANDARDS





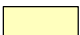
SUDDIVISIONE DEL TERRITORIO COMUNALE

Planimetria scala 1:25.000



LEGENDA

Delibera di Consiglio Comunale n. 47 del 20.06.2013

	ZONA A - Centro Storico	€/mq 88,00
	ZONA B - Fuori le Mura	€/mq 62,00
	ZONA C - Frazioni collegate al capoluogo	€/mq 52,00
	ZONA D	€/mq 40,00
	ZONA E	€/mq 30,00