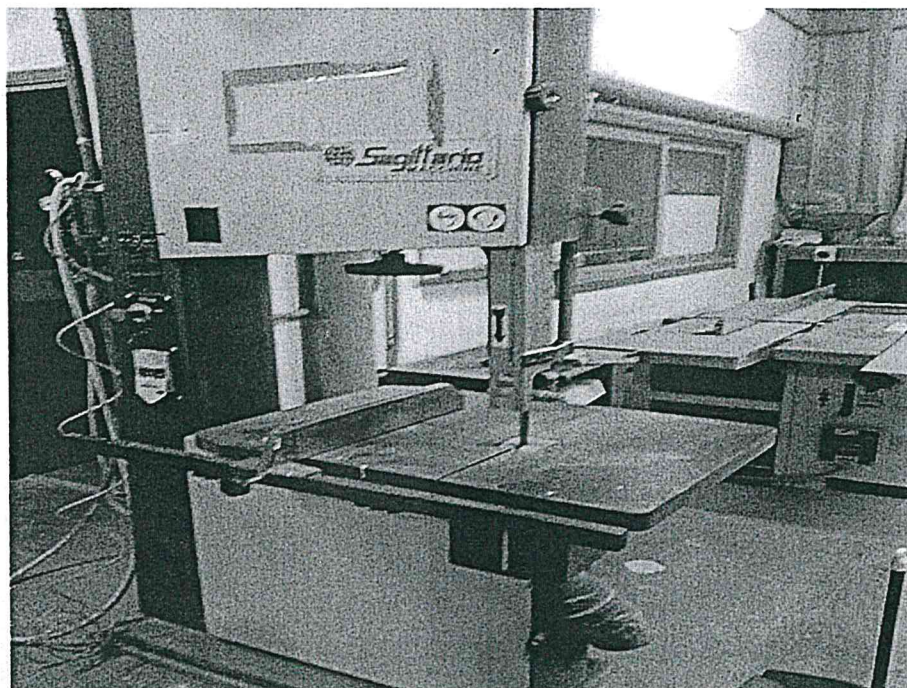


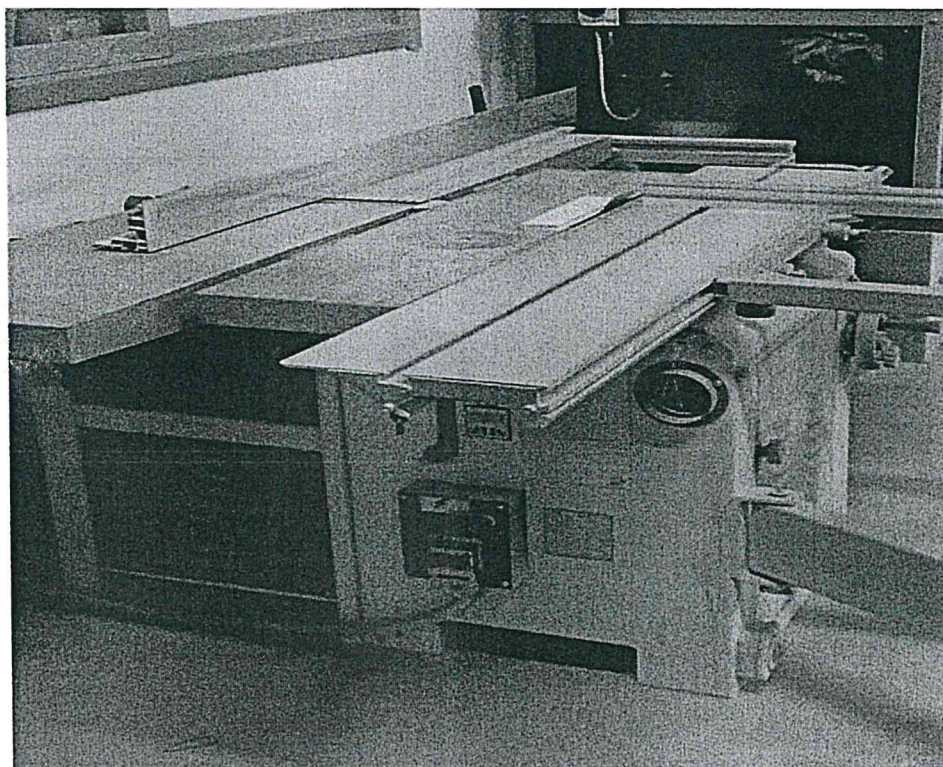
ALLEGATO C

OFFICINA DI FALEGNAMERIA

SEGA A NASTRO PER LEGNO – MODELLO SAGITTARIO SC600N

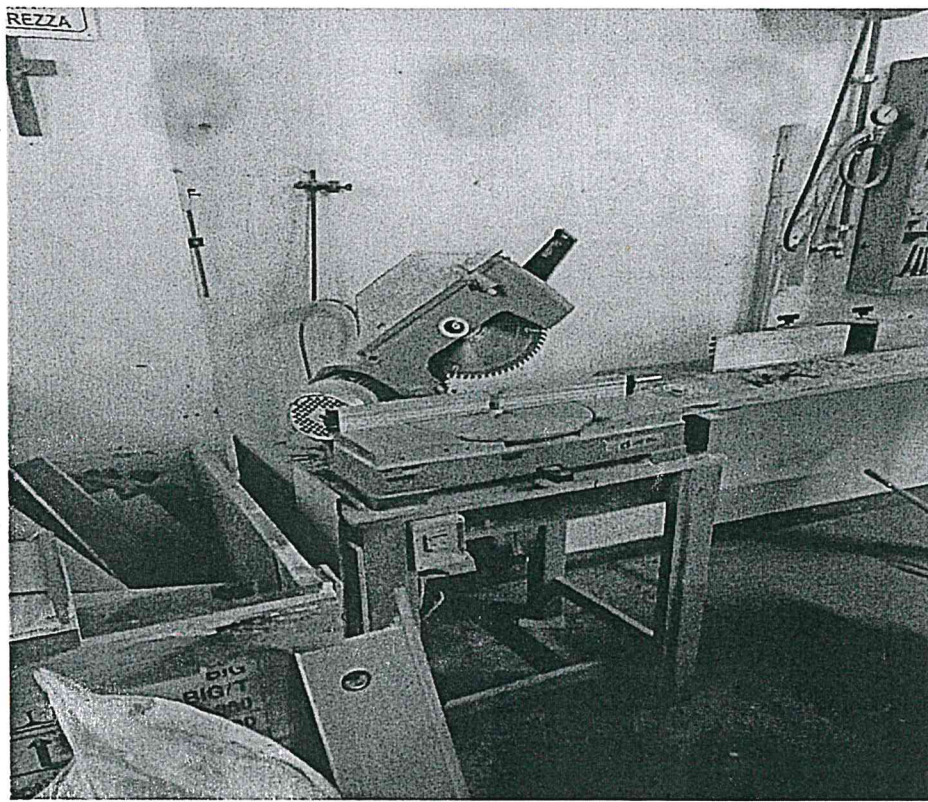


SEGA CIRCOLARE PER LEGNO ELETTRICA BLACK & DECKER

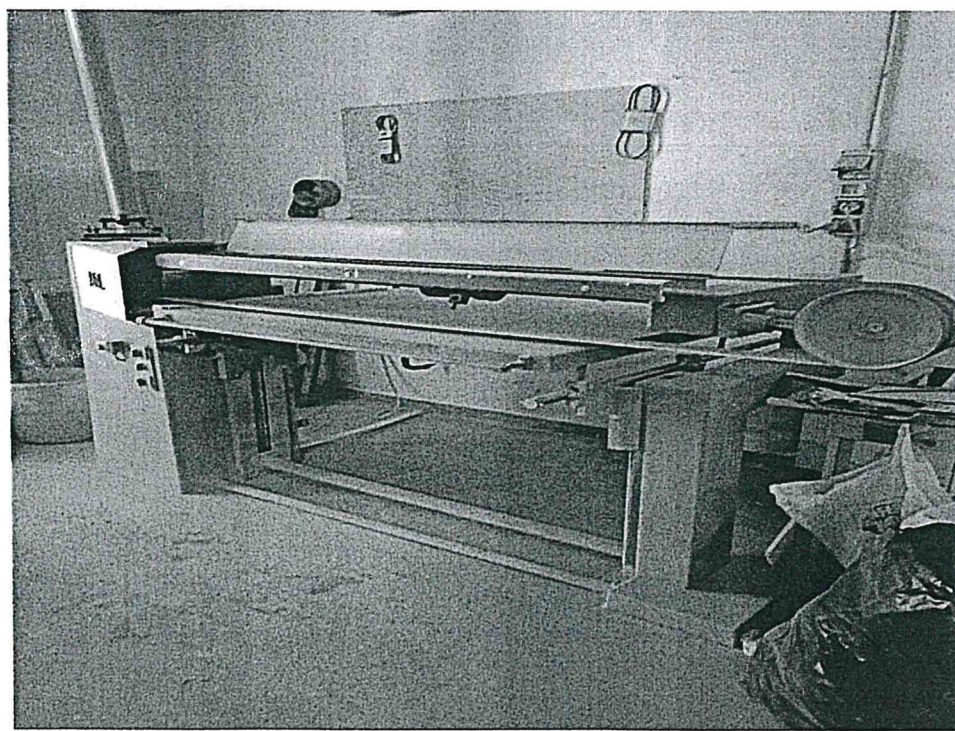


ALLEGATO C

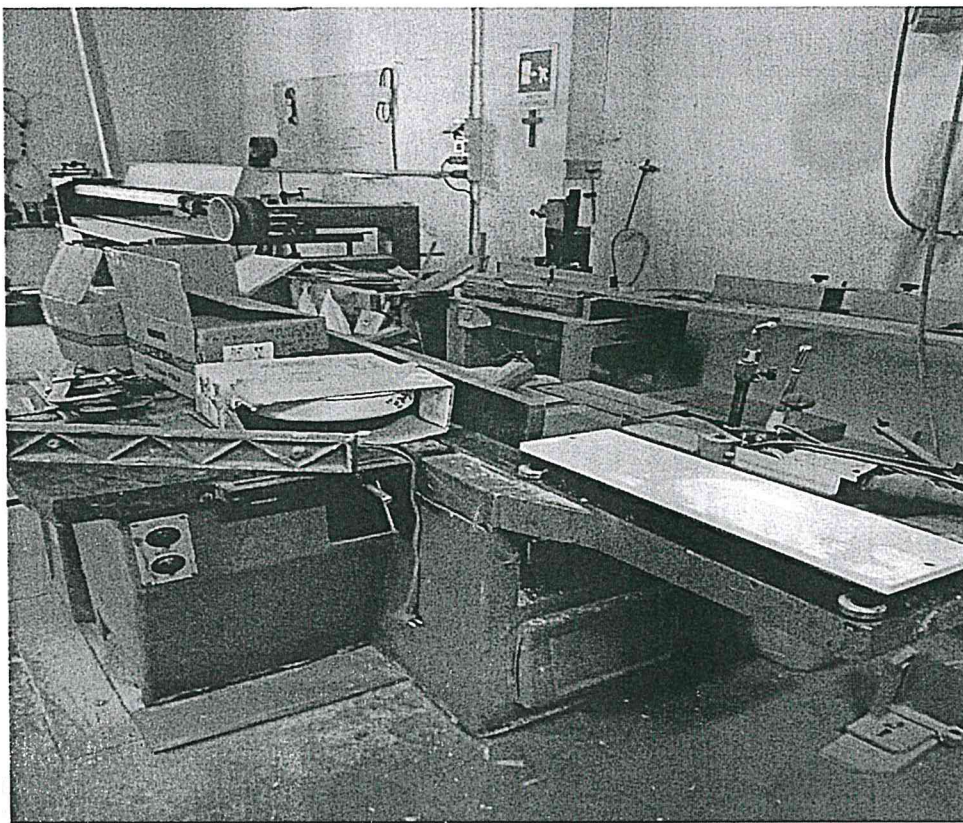
TRONCATRICE PER LEGNO COMPA BIG 300



LEVIGATRICE A DISCO STAYER



ALLEGATO C
SEGA COMBINATA STETON C400



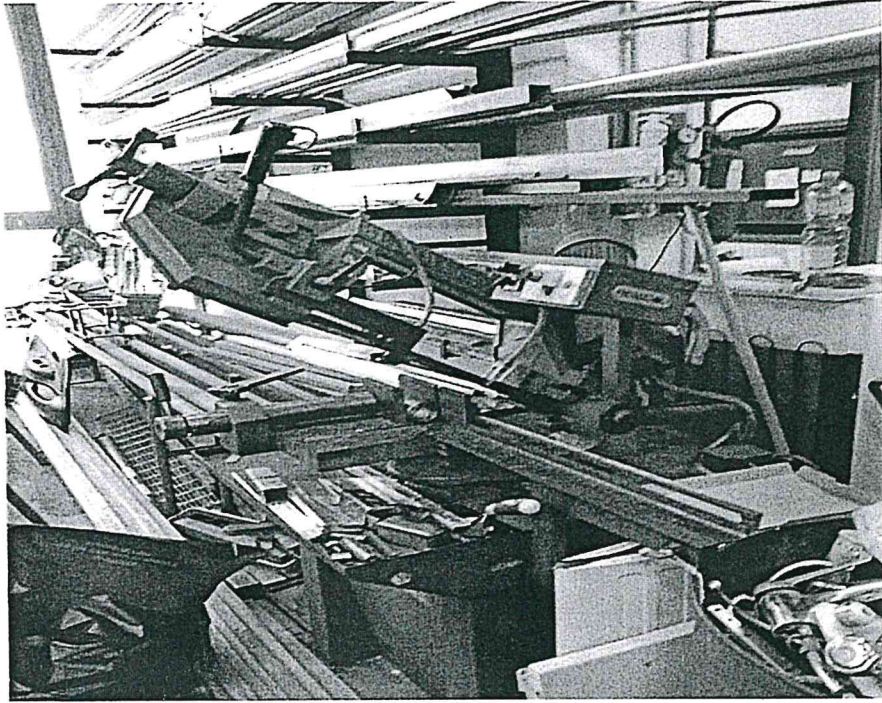
LOTTO 1

Il Direttore del Servizio Tecnico
Ing. Gaetano Cilia

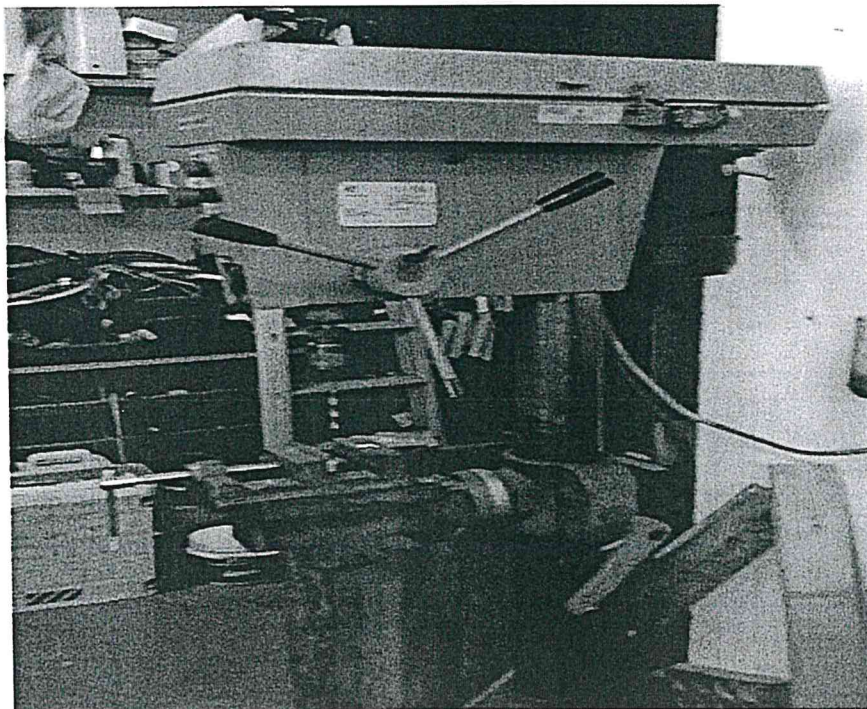
ALLEGATO D

OFFICINA MECCANICA

SEGA A NASTRO PER METALLO PEDR. BRAUN SU 2500N

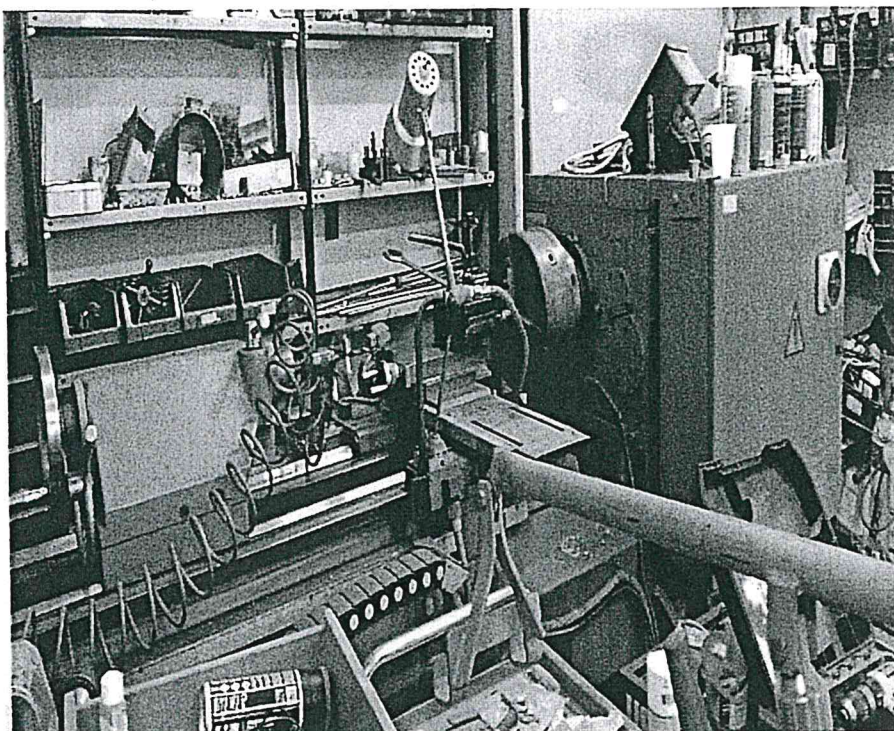


TRAPANO A COLONNA PER METALLO SUPERCONDOR 25

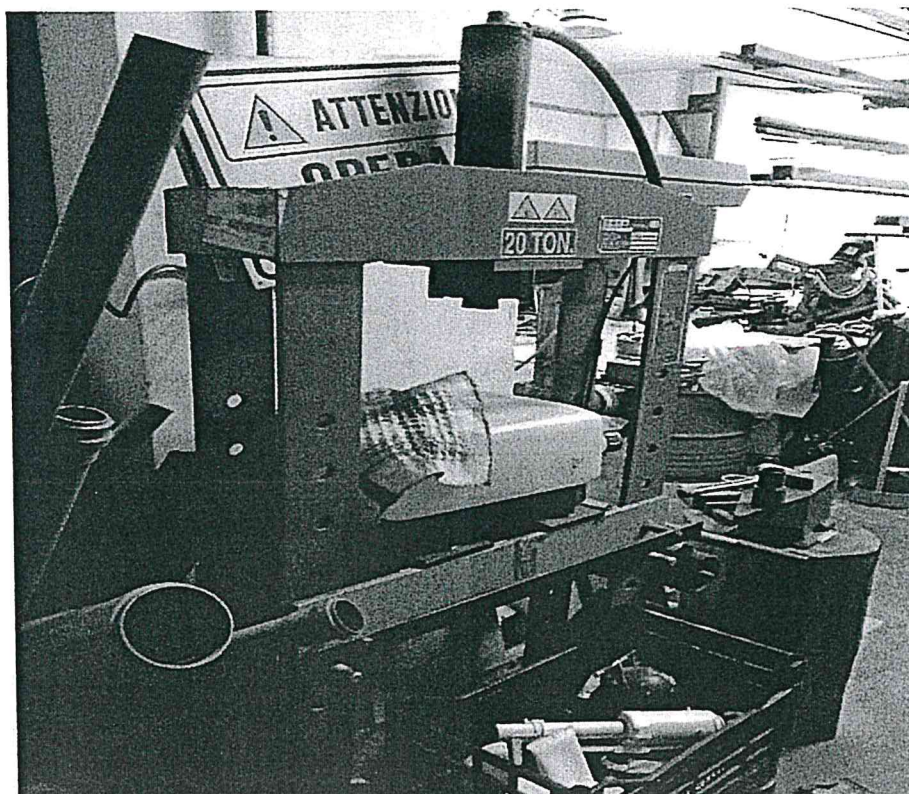


ALLEGATO D

TORNI A BANCO PER METALLI SERIE MEXIN MOD.SN402X1000

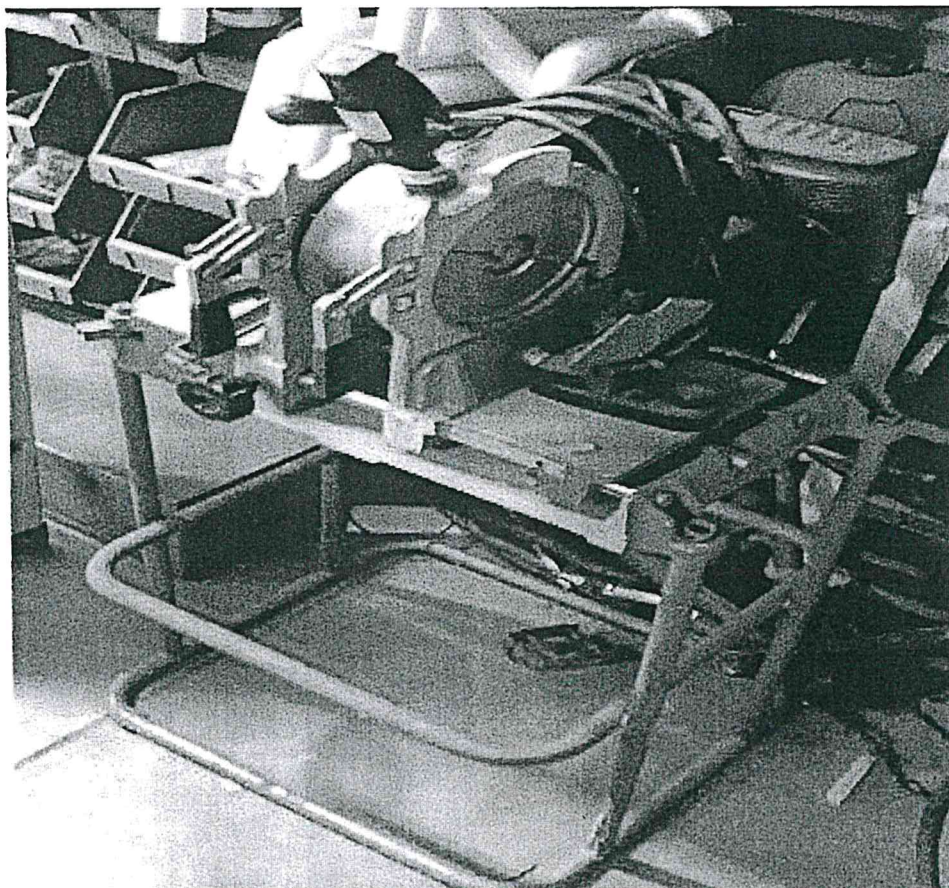


PRESSA IDRAULICA – PNEUMATICA OMCN

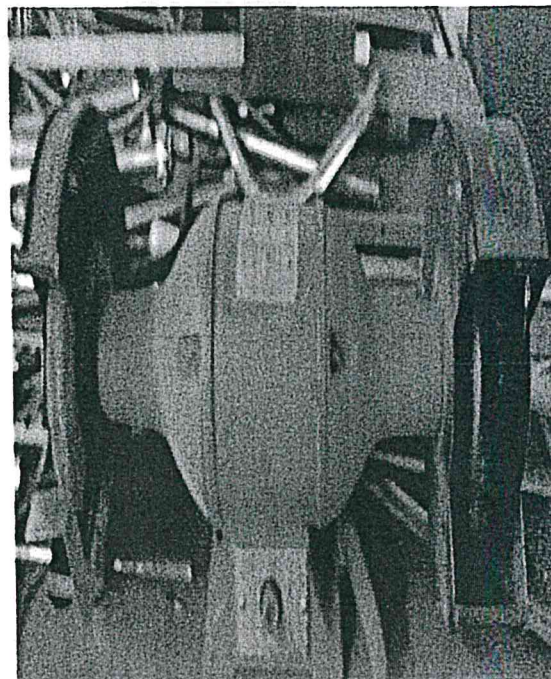
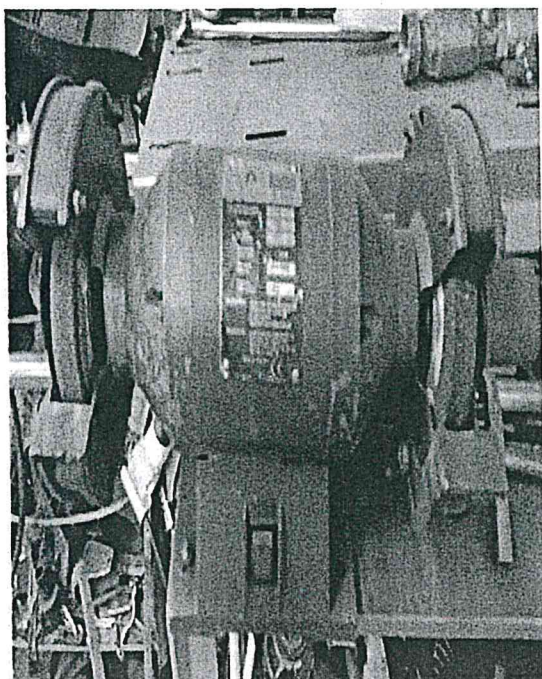


ALLEGATO D

FILIERA A BASAMENTO CON APPOGGIO HYDROCENTER 4575/2

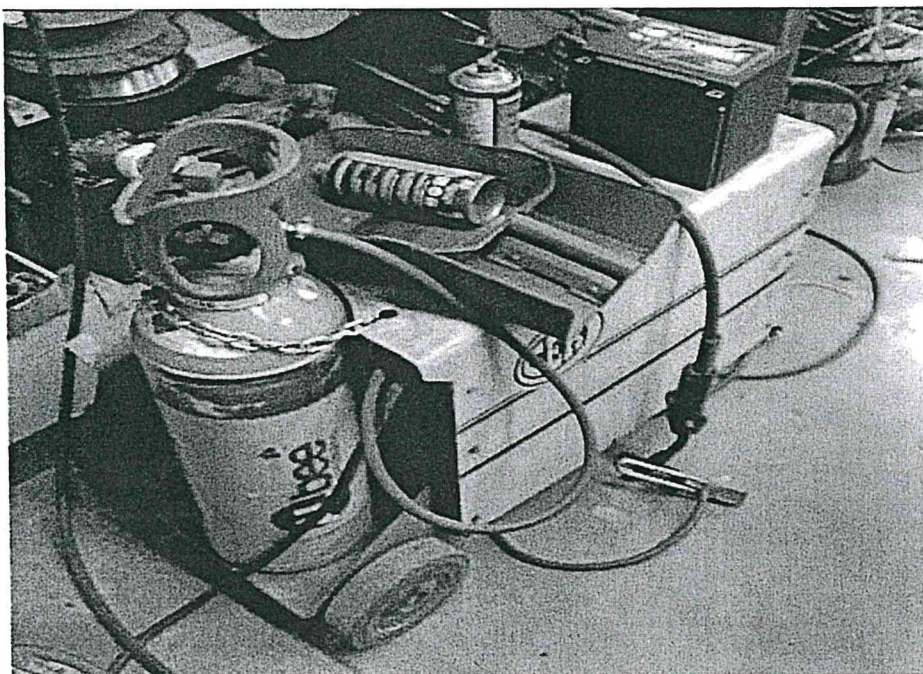
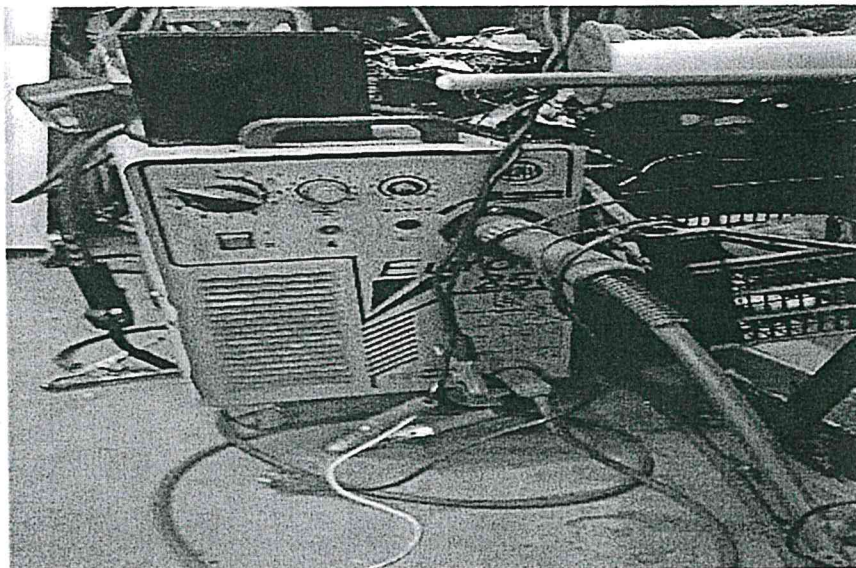


MOLA O SMERIGLIATRICE DEWALT 230MM



ALLEGATO D

SALDATRICE ELETTRICA CEA EUROFIL 250



LOTTO 02

Il Direttore del Servizio Tecnico
Ing. Gaetano Cilia

A handwritten signature in black ink, appearing to read "Gaetano Cilia", is written over a horizontal line. The signature is stylized and cursive.